

Island County Fire District #1
(Camano island Fire and Rescue)
525 E. North Camano Drive
Camano Island, WA 98282

Substitute House Bill 1756 and
Resolution 2008-13 (Page 2)
Grantor: island County FPD #1

SUBSTITUTE

HOUSE

BILL

1756

2007

Please note that Substitute House Bill 1756 pertains only to career staff and tracks only career staff responses and does not include volunteer or part time employees.

Camano Island Fire and Rescue is not just a career staffed department. Camano Island Fire and Rescue is a combination department compiled of Thirty One (31) career line personnel, Five (5) Administrative Staff, Twenty (20) part time personnel, and Twenty Five (25) volunteer personnel.

Data shown in this report reflects career responses. For the future Camano Island Fire and Rescue would like to track not only career but volunteer responses as well.

All information, statistics, turnout times, response/travel times compiled from data retrieved from Fire House and ICOM Dispatch Times (Spillman), year 2007.

Camano Island Fire and Rescue
(Island County Fire District #1)
525 E. North Camano Dr
Camano Island, WA 98282

RESOLUTION 2008-13

Resolution adopting the performance policy, standards and objectives outlined in Substitute House Bill 1756 as Camano Island Fire and Rescue emergency resource deployment and response time objectives.

WHEREAS, Camano Island Fire and Rescue is legally established as a fire department through Island County, Washington State to provide certain emergency medical, fire and rescue services; and,

WHEREAS, Camano Island Fire and Rescue has a mission statement and goals and objectives to guide the organization in providing fire and medical services to our community; and,

WHEREAS, Camano Island Fire and Rescue has a basic organizational structure which may include the Board of Fire Commissioners, Chief , Officers, Firefighters, Paramedics, Emergency Medical Technicians, Support Volunteers/Chaplains; and,

WHEREAS, Camano Island Fire and Rescue has a certain number of members now and in the future who perform tasks required to accomplish our response objectives; and,

WHEREAS, Camano Island Fire and Rescue is required by state law to establish turnout and response time goals for the first arriving Basic Life Support, Advanced Life Support and Fire Engine responses for fire suppression calls and response time goals for a full alarm assignment for Fire Engine responses to fire suppression calls; and ,

WHEREAS, Camano Island Fire and Rescue has evaluated the elements identified in SHB 1756 and included those provisions deemed appropriate in the Department's emergency service delivery; and,

WHEREAS, Camano Island Fire and Rescue has developed written response coverage objectives required to comply with the applicable provisions of SHB 1756.

NOW, THEREFORE BE IT RESOLVED, that Camano Island Fire and Rescue's Board of Fire Commissioners hereby adopts the attached response coverage document as Camano Island Fire and Rescue's official policy for determining emergency medical, fire and rescue resources of the department; and,

BE IT FURTHER RESOLVED, that the attached response coverage document officially defines the Camano Island Fire and Rescue's written policies and procedures that establish distribution and concentration of fixed and mobile resources of the department.

This resolution was adopted at a regularly scheduled public meeting of Camano Island Fire and Rescue's Board of Fire Commissioners on December 22, 2008.

Chair

Commissioner

Commissioner

Commissioner

Commissioner

ATTEST: Board Secretary

Attachment: Response Coverage Document

POLICY STATEMENTS

Camano Island Fire and Rescue has existed as a Fire District within the State of Washington since April 14, 1945. The fire district was organized under the tenants of Title 52 of the RCW, with the legal formation of the Fire District mandated by the commissioners – **Legal Authority**, Section 1.1 – 1.7.

Camano Island Fire and Rescue provides service to 43 square miles in rural Washington State within Island County.

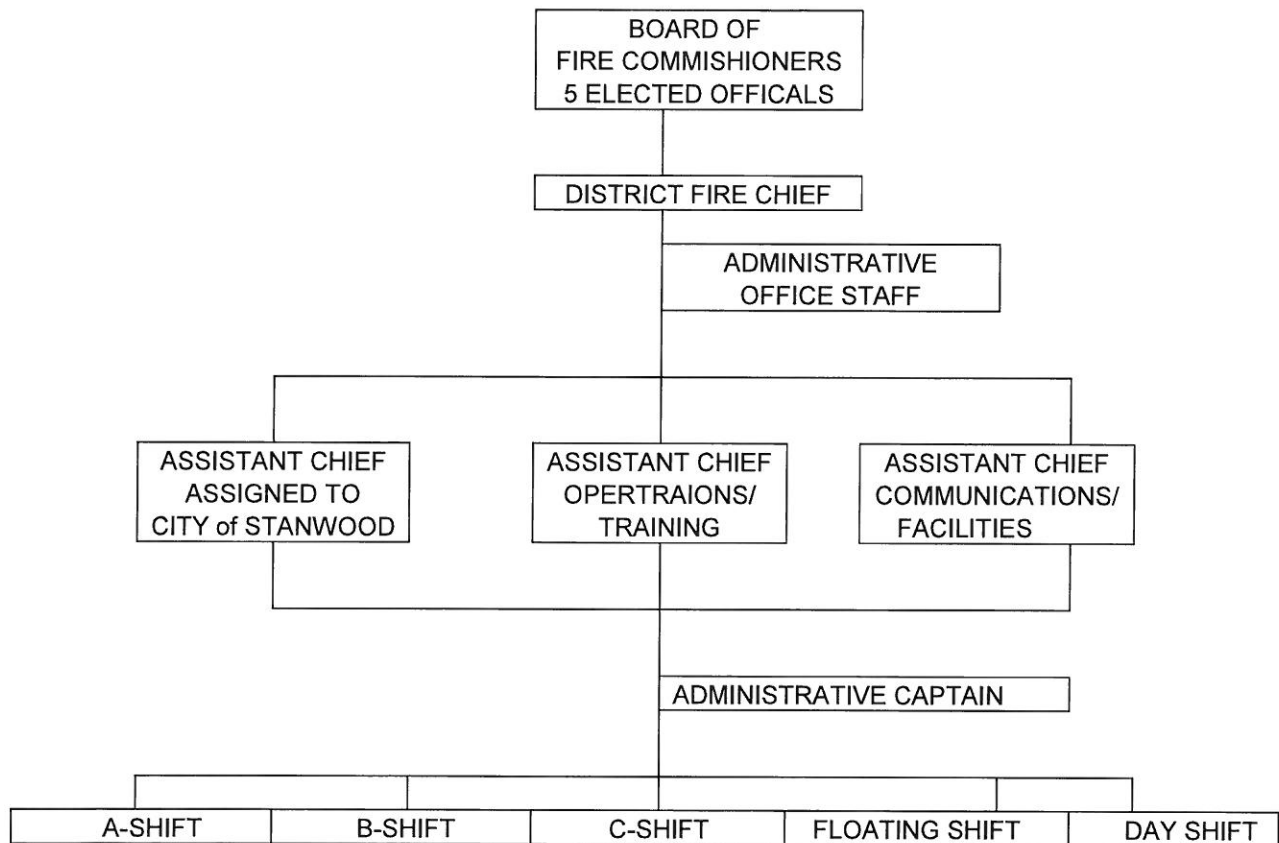
The Services provided by Camano Island Fire and Rescue include:

- a) Fire Suppression
- b) First Response Basic Life Support (BLS) Emergency Services
- c) First Response Advanced Life Support (ALS) Emergency Services
- d) Hazmat "Awareness Level" Response
- e) Technical Rescue Response
- f) Marine Rescue Response
- g) Public Education
- h) Fire Prevention
- i) Support (Chaplain) Services

Total Emergency Responses for 2008 were broken down as follows:

- Emergency Medical Responses: 1951
- Fire Responses: 246
- Marine Rescue Responses 31
- Technical Rescue Responses: 1
- Service Call Responses: 314
- **Total Responses: 2,543**

Camano Island Fire and Rescue operates under a chain-of-command which has been established by the Board of Fire Commissioners, who are elected to represent the public they serve. The chain-of-command, or organizational chart, looks like the following:



In 2007, Camano Island Fire and Rescue Fire District employed thirty one (31) career line personal, five (5) administration staff members, and twenty five (25) volunteers. The total number by their assigned areas of responsibility is as follows:

Number of employees:

• Commissioners	5
• Chief Officers	3
• Career Captains	5
• Career Paramedics	9
• Career Firefighters	14
• Administration Staff	3
• Mechanic	2
• Part-Time FF/EMT	20
• Volunteer FF/EMT	25
• Support Staff (Support 99, 104)	22
• TOTAL STAFF	36 career and 67 other

The functions performed by Camano Island Fire and Rescue include, but are not limited to, the following:

- a) Emergency response to fires and medical aid emergencies by career and volunteer staff
- b) Emergency response to motor vehicle accidents within the district.
- c) Mutual aid emergency responses when requested by neighboring jurisdictions
- d) Public Education classes in local elementary schools
- e) Public Education tours in Fire stations
- f) Coordination with local Emergency management personnel from Island County
- g) Emergency response to marine rescues
- h) Emergency response to high angle rope rescues

RESPONSE STANDARDS

1) Turnout time

Turnout time defined as: when units acknowledge notification of the event to the beginning point of response (wheels rolling).

Turnout Time Standard:

Camano Island Fire and Rescue will adopt a turnout time standard of sixty (60) seconds 90% of the time when planned facility improvements and associated staffing enhancements are put in place.

Actual Department Comparison for the year 2007:

Camano Island Fire and Rescue met the turnout time objective 82% of the time. The overall average for turnout time was one minute thirty six seconds (1:36).

2) Arrival of 1st Engine Company at Fire Suppression Incident

Response Time Standard:

Given the current facilities and staffing resources, the District accepts a travel response standard of 12 minutes for the first arriving engine. It is Camano Island Fire and Rescue's goal, as stated in the Long Range Facilities Feasibility Study, to have the first NFPA rated fire engine with three (3) qualified firefighters respond within eight (8) minutes 85% of the time.

PLAN OF ACTION

To meet the response time objectives for items 1 – 4, Camano Island Fire and Rescue will evaluate its response data to determine if relocating resources, improving reliability or other organizational changes may improve our ability to accomplish our response goals. In the future Camano Island Fire and Rescue will look to better its data collection process to differentiate between Camano and Stanwood calls. Camano Island Fire and Rescue will develop a staffing plan that will consider volunteer recruiting and retention programs as well as an increase of career staffing. All increases will require budget support and any plan will be developed with all stakeholders input and presented to the elected officials.

Actual Department Comparison for the year 2007:

Camano Island Fire and Rescue met the department's standard of the first engine response time. The overall response/travel time for the first fire engine to arrive when responding to a fire suppression incident was nine minutes five seconds (09:05). Camano Island Fire & Rescue did not meet the goal of eight minutes (8) 85% of the time. Times are based on ICOM Dispatch times (Spillman) and Fire House Records Management Software for the Turnout/Reaction time. The Turnout/Reaction time was subtracted from the Spillman Dispatch time. Call types used are Residential Fires, Brush Fires, Chimney Fires, and Commercial Fires.

- 3) Deployment of full first alarm assignment at a fire suppression incident :** Full first alarm defined by Camano Island Fire and Rescue includes four (4) engines, two (2) tenders, one (1) rescue, one (1) medic unit, one (1) command vehicle.

Given the current facilities and staffing resources, Camano Island Fire and Rescue has elected for full first alarm response/travel time to be the same as the response time goal for first arriving Engine Company and first arriving tender. Camano Island Fire and Rescue's goal, as stated in the Long Range Facilities Feasibility Study, is to have the first NFPA rated fire engine with three (3) qualified firefighters respond within eight (8) minutes 85% of the time. Camano Island Fire and Rescue has adopted this thought process due to the fact that the entire island is covered by only two engines and one medic unit, therefore all other apparatus that would make up the full first alarm response is supplemented by volunteers or mutual aid.

- 4) Arrival of First Responder or higher level capability at an emergency medical incident.**
First Responder or higher can be defined as a BLS unit or Engine.

Response Time Standard:

It is Camano Island Fire and Rescue's goal, as stated in the Long Range Facilities Feasibility Study, to have Basic Life Support (2 Firefighter / Emergency Medical Technicians) respond within seven (7) minutes 85% of the time. (Long term goal of under five (5) minutes)

Actual Department Comparison for the year 2007:

Camano Island Fire and Rescue exceeded the department's standard of Basic Life Support. The overall average response/travel time for the first emergency unit with a minimum of two (2) Emergency Medical Technicians was eight minutes and 1 second (8:01). Response times exceed the department's goal due to long distances traveled from station to emergency scene and the area from which resources respond. Times are based on ICOM Dispatch times (Spillman) and Fire House Records Management Software.

- 5) Arrival of Advanced Life Support unit at an emergency medical incident:** Advanced Life Support defined as minimum of one Paramedic/EMT and ALS unit defined by the State of Washington.

Response Time Standard:

It is Camano Island Fire and Rescue's goal, as stated in the Long Range Facilities Feasibility Study, to have Advanced Life Support (1 Paramedic and 1 Emergency Medical Technician) respond within twelve (12) minutes 85% of the time.

Actual Department Comparison for the year 2007:

Camano Island Fire and Rescue met the department's goal of Advanced Life Support. The overall average response/travel time for an Advanced Life Support unit was ten minutes and twenty four seconds (10:24). Times are based on ICOM Dispatch times (Spillman) and Fire House Records Management Software.

PREDICTABLE RESULTS

Camano Island Fire and Rescue serves a forty three (43) square mile island that is extremely diverse in its demographics. The island is twenty two (22) miles long, approximately six (6) miles across at the north end and less than one (1) mile across at the south end, and covers more than 63 miles of coastal shoreline. Elevation ranges from sea level to five hundred and eighty one (581) feet. Camano Island is considered rural with small suburban residential developments dispersed within the rural environment. It is expected that some response times will be over the goals set forth in this policy. Due to long distance responses and limited career stations, some areas of the island will experience greater response/travel times no matter what time of day or day of the week. Response/travel times will also increase due to inclement weather, traffic, and units already assigned to a previous call.

Prior to passage of SHB 1756, the Board of Commissioners for Camano Island Fire and Rescue established a number of emergency response "goals" that the Board felt were either attainable or would be attainable in the future, following completion of the District's Strategic Facilities Plan objectives. The Board was also well aware that there is a difference between a "goal" and a "standard." With the massive population growth on Camano Island in recent years, the fire department must necessarily grow along with those increases if it is to eventually attain the response goals stated by the Board of Commissioners. The Board also recognized that establishing "standards" that are easily reached at this time would be meaningless compared with goals to be reached in the future. Therefore, while the provisions of SHB 1756 require "standards" to be met 90% of the time, CIFR determined that it would not water-down its response goals simply to assure that standards could be met. The Board of Commissioners specifically intends that the "standards" referred to throughout this report are instead "goals" which are to be attained in the future, and not established levels of service to be met at this time.